



## Go-tcha Evolve - The Trainer Club Edition

### User Guide

**Thank you for purchasing the Go-tcha Evolve Trainer Club Edition for Pokémon GO!**

Enjoy Pokémon GO on the move without looking at your smartphone!

#### What's In The Box?

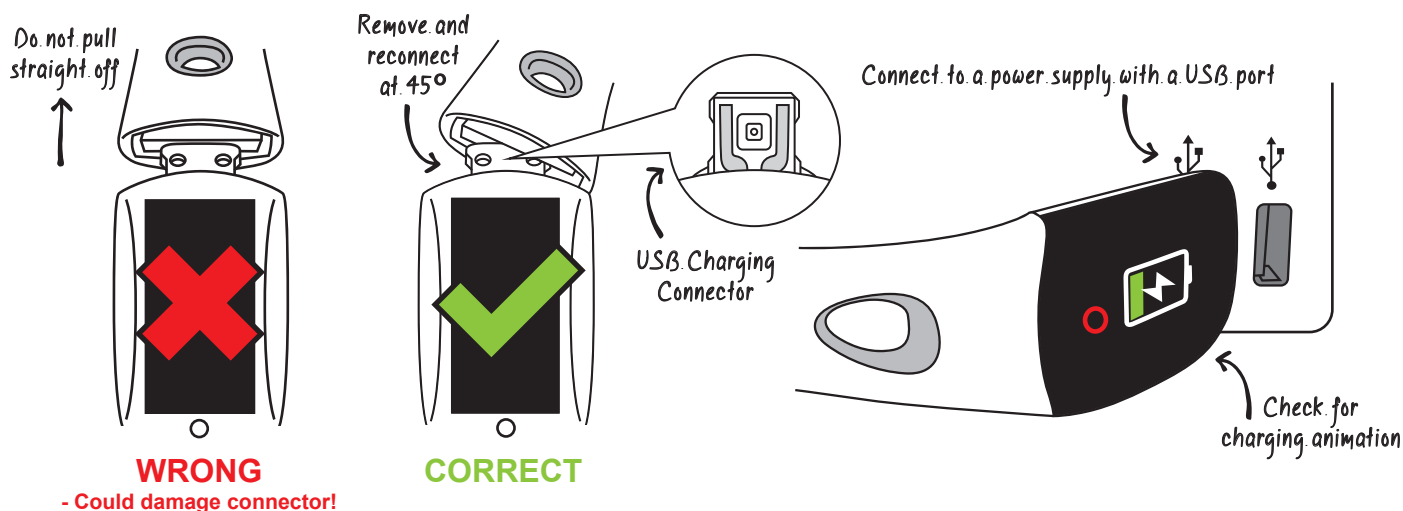
In your Go-tcha Evolve for Pokémon GO box you should receive:

- 🕒 x1 Go-tcha Evolve Trainer Club Edition Smartwatch
- 📄 x1 Charging Instruction Card



#### Charging Your Go-tcha

The Go-tcha Evolve has a built-in USB charging connector accessed by removing the **buckle end** of strap. Connect the built-in USB charging unit into a power source - fully charged and ready to use in 1 1/2 hours.



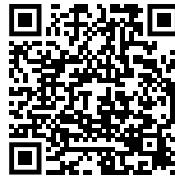
**IMPORTANT:** Check that the Go-tcha Evolve is inserted into the USB port of the power source the correct way up. Even though it goes into the USB port both ways - the animation screen will only appear when inserted in the correct orientation. Only when the charging animation is displayed, is your Go-tcha Evolve actually charging.

## Before You Start - Ensure that your Go-tcha Evolve has the latest firmware

Download the Go-tcha Evolve App for even more features like checking your stats and changing your smartwatch settings to enhance the Go-tcha experience. Simply scan the QR code to take you to Go-tcha Evolve on the Apple or Android App Store page or search 'Go-tcha Evolve Trainer Club' in the App store.

To connect your Go-tcha Evolve to the Go-tcha Evolve Trainer Club App, you must close the Pokémon Go App. Press the button on the Go-tcha Evolve to wake the screen and it will connect automatically to the open Go-tcha Evolve Trainer Club App. Updates will download automatically.

**Note:** The Go-tcha Evolve cannot connect to more than one App at a time so the Pokémon Go App cannot be running in the background. If you tried to connect with the Pokémon Go App running, close both Apps and then open the Go-tcha Evolve App again.



**\*Time Setting:** The Go-tcha Evolve App will automatically update the time on your Go-tcha Evolve when you connect your watch to the app. The App will also enable the Logo/Time setting screen to allow you to choose which you would like as your default screen setting.

---

## Connecting Your Go-tcha Evolve

To connect your Go-tcha Evolve to the Pokémon App:

- 🕒 Open the Pokémon GO App
  - 🕒 Touch the Main Menu
  - 🕒 Touch Settings
  - 🕒 Touch 'Pokémon GO Plus'
  - 🕒 Press the red button on the Go-tcha Evolve to make it discoverable to the Pokémon Go App
  - 🕒 Touch your 'Pokémon GO Plus' under Available Devices list to connect
  - 🕒 Accept the Bluetooth pairing message on your smartphone to complete the connection
- 

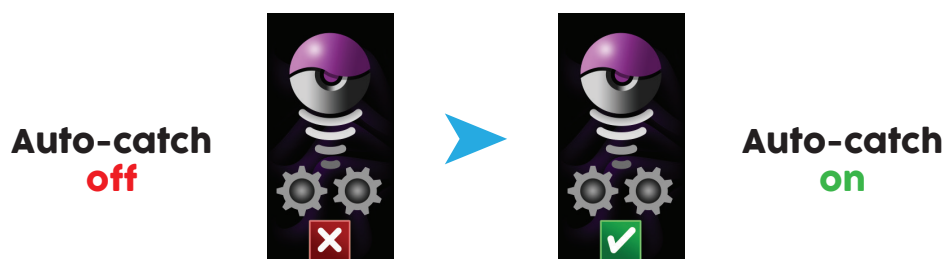
## Using Go-tcha Evolve - Manually Catch Pokémon and Collect at Pokéstops

- 🕒 Go-tcha Evolve will vibrate and animate the screen to show a new/duplicate Pokémon is near.
- 🕒 Press the red Go-tcha Evolve button to catch the Pokémon.
- 🕒 Go-tcha Evolve will vibrate and animate the screen to show a successful/unsuccessful catch.
  
- 🕒 Go-tcha Evolve will vibrate and animate the screen to show when a Pokéstop is in range.
- 🕒 Press the red Go-tcha Evolve button to retrieve items from a Pokéstop.
- 🕒 Go-tcha Evolve will vibrate and animate the screen to show it has successfully/unsuccessfully collected the items and how many items it has collected.

See '**Go-tcha Evolve Animation Screens**' on pages 2-3 of this User Guide for a complete guide to the colour screen animation alerts.

## Using Your Go-tcha - Auto-catch Pokémon and Collect at Pokéstops

To turn the 'Auto-catch' function on, press the Go-tcha Evolve button until the auto-catch symbol changes as below.



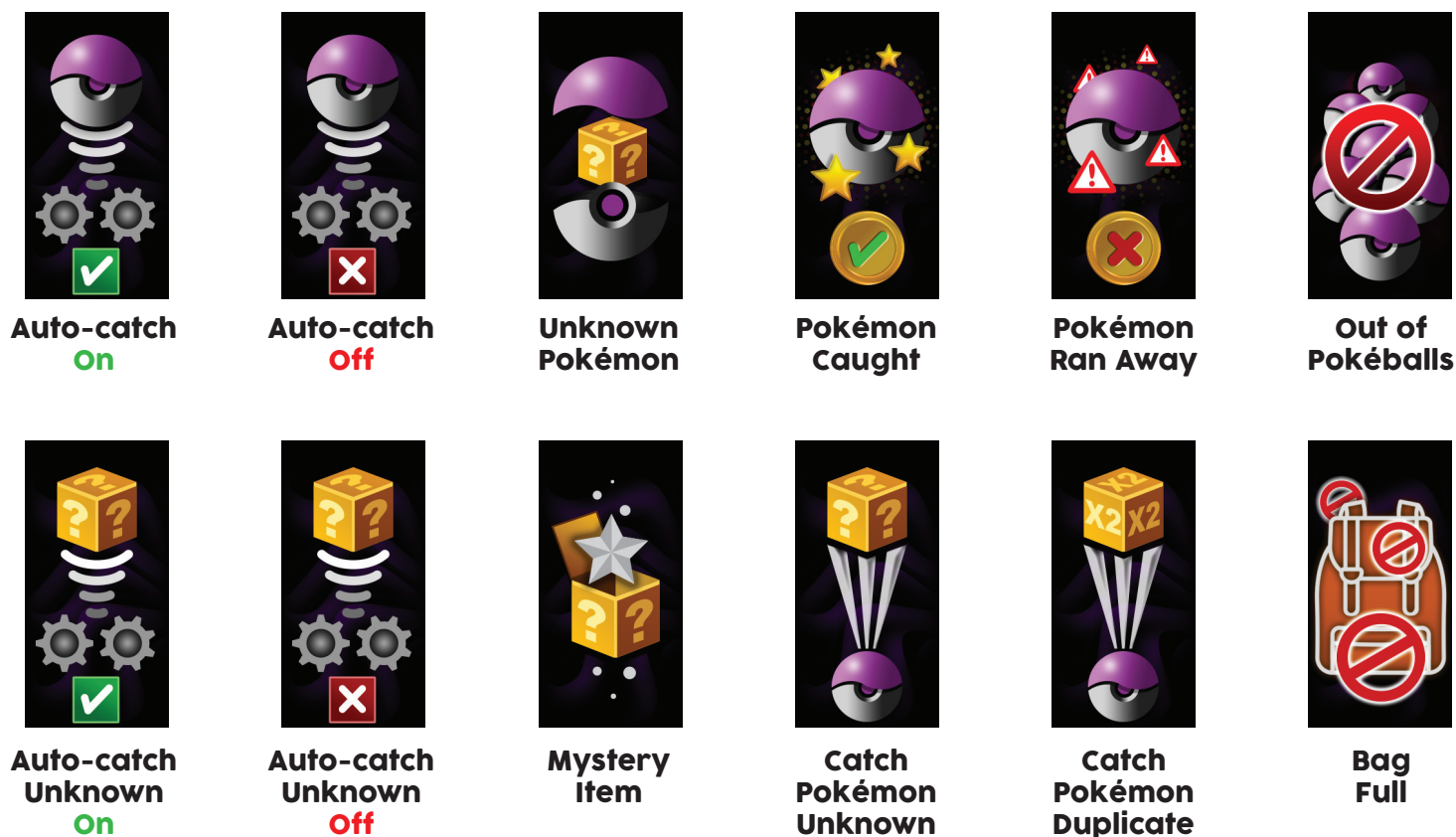
If you have Auto Catch on:

- Go-tcha Evolve will vibrate and animate the screen to show a successful/unsuccessful catch.
- Go-tcha Evolve will vibrate and animate the screen to show it has successfully/unsuccessfully collected the items and how many items it has collected at a Pokéstop.

To turn 'Auto-catch' off, press and hold the Go-tcha button until the  appears in the box.

## Go-tcha Evolve Animation Screens

The Go-tcha Evolve has many colour animations to alert you. On the next page of the manual you will find a full list of animation screens and their functions.

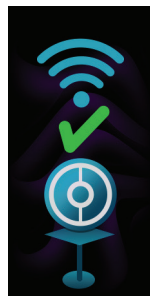




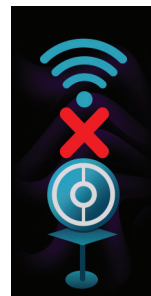
**Auto-Pokéstop**  
**On**



**Auto-Pokéstop**  
**Off**



**Pokéstop**  
**In Range**



**Pokéstop**  
**Out Of Range**



**Pedometer**



**Charging**



**Watch Paired?**  
**Yes**



**Watch Paired?**  
**No**



**Vibrate Watch?**  
**Yes**



**Vibrate Watch?**  
**No**



**Silence Watch Alerts?**  
**Yes**



**Silence Watch Alerts?**  
**No**



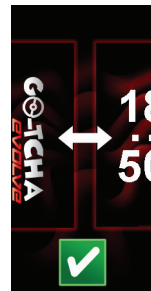
**Update**  
**Ready**



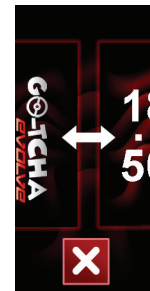
**Updating**



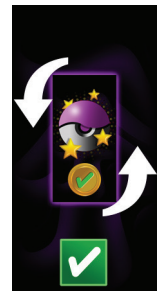
**Update**  
**Complete**



**Switch logo to clock screen**  
**on\***



**Switch logo to clock screen**  
**off\***



**Flip Screen**  
(Your Go-tcha Evolve may or may not have this function depending on its region)



**THIS PRODUCT IS NOT SPONSORED, ENDORSED, OR APPROVED BY THE POKÉMON COMPANY OR Niantic.**

Compatible with iPhone 5s, iPhone 6, iPhone 6 Plus, iPhone 6S, iPhone 6S Plus, iPhone SE, iPhone 7, iPhone 7 Plus, iPhone 8, iPhone 8 Plus, iPhone X, iPhone XS, iPhone XS Max, iPhone XR, iPhone 11, iPhone 11 Pro and iPhone 11 Pro Max devices with iOS 10.0 or later installed. Compatible with Android devices with 2 GB RAM or more, Bluetooth Smart (Bluetooth Ver. 4.0 or higher) capability, and Android Ver. 5.0 or higher installed.

#### Technical Support

Before contacting Datel's customer service department, please ensure that you have read through and understood the information in this manual/guide. If you contact support, please ensure that you have information on when and where you purchased this product to hand.

Web: <http://support.codejunkies.com/>



© 2021 Datel Ltd. Go-tcha Evolve Trainer Club Edition is a trademark of Datel Ltd. Pokémon is a trademark or registered Trademark of the POKÉMON COMPANY. All other trademarks are the property of their respective owners. Go-tcha Evolve for Pokémon Go is a 100% unofficial product and is NOT sponsored, endorsed or approved by NINTENDO, nor any games developer or publisher.