



## User Guide

### Thank you for purchasing the Go-tcha Clip for Pokémon GO!

Enjoy Pokémon GO on the move without looking at your smartphone!

### What's In The Box?

In your Go-tcha Clip for Pokémon Go box you should receive:

- 🕒 x1 Go-tcha Clip USB device
- 🕒 x1 Go-tcha Clip Case
- 🕒 x1 Magnetic USB charger cable

### Connecting Your Go-tcha Clip

To connect your Go-tcha Clip to the Pokémon App:

- 🕒 Open the Pokémon GO App
- 🕒 Touch the Main Menu
- 🕒 Touch Settings
- 🕒 Touch 'Pokémon GO Plus'
- 🕒 Press the button on the Go-tcha Clip to make it discoverable to the Pokémon Go App
- 🕒 Touch your 'Pokémon GO Plus' under Available Devices list to connect.



### Using Your Go-tcha Clip - Manual Catch

- 🕒 Go-tcha Clip will vibrate and animate the screen to show a new/duplicate Pokémon is near
- 🕒 Press the Go-tcha Clip button/screen to catch the Pokémon
- 🕒 Go-tcha Clip will vibrate and animate the screen to show a successful/unsuccessful catch
- 🕒 Go-tcha Clip will vibrate and animate the screen to show when a Pokéstop is in range
- 🕒 Press the Go-tcha Clip button to retrieve items from a Pokéstop
- 🕒 Go-tcha Clip will vibrate and animate the screen to show it has successfully/unsuccessfully collected the items and how many items it has collected

See '**Go-tcha Clip Screens**' on pages for a complete guide to the screen animation alerts.

## Using Your Go-tcha Clip- Auto Catch

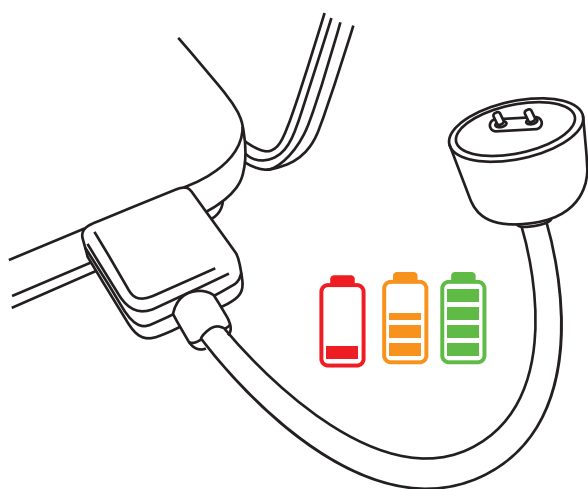
To turn the 'Auto-catch' function on, press the Go-tcha Clip button until '**Auto-catch ON**' is selected.

If you have Auto Catch on:

- Go-tcha Clip will vibrate and animate the screen to show a successful/unsuccessful catch
- Go-tcha Clip will vibrate and animate the screen to show it has successfully/unsuccessfully collected the items and how many items it has collected at a Pokéstop

To turn 'Auto-catch' off, press and hold the Go-tcha Clip button until '**Auto-catch OFF**' is selected.

## Charging Your Go-tcha Clip

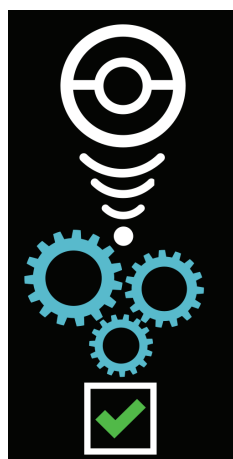


The Go-tcha Clip charges via a magnetic USB cable. Simply remove the Go-tcha Clip unit from the clip case, connect the magnetic cable and connect the other end to a USB power source. The cable will only connect one way around - you will feel the magnets indicating the correct orientation as you position the connector. Simply return the Go-tcha Clip to the case when fully charged.

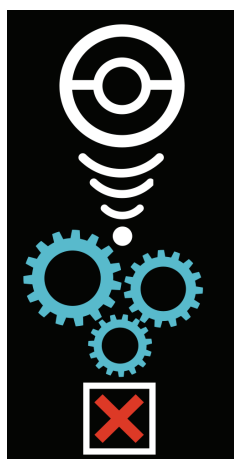
A full charge takes approx. 1 hour and lasts for approx. 12 hours with continuous use. Standby time is approx. 48 hours.

Once connected you can check that your Go-tcha is charging by pressing the screen button. The charging animation will appear to confirm that the Go-tcha is charging. If there is another Go-tcha animation running, then wait for the animation to stop and the screen is blank - now press the screen button to confirm the charging animation is displayed.

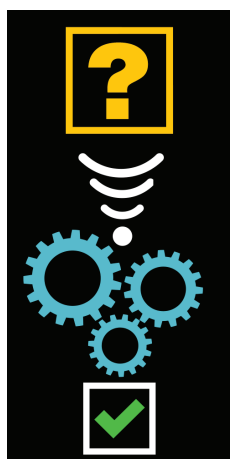
## Go-tcha Clip Screens



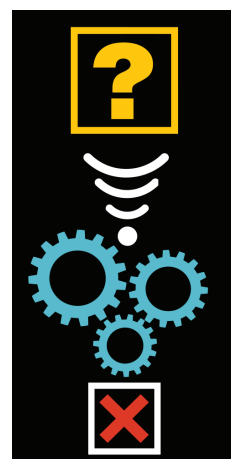
**Auto-catch**  
**ON**



**Auto-catch**  
**OFF**



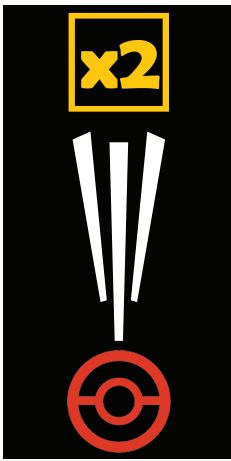
**Auto-catch**  
**new Pokémon**  
**ON**



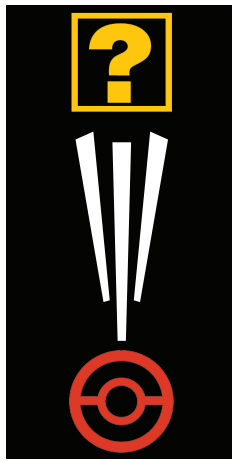
**Auto-catch**  
**new Pokémon**  
**OFF**



**Mystery**  
**Item**



Catching Known  
Pokémon



Catching  
Unknown  
Pokémon



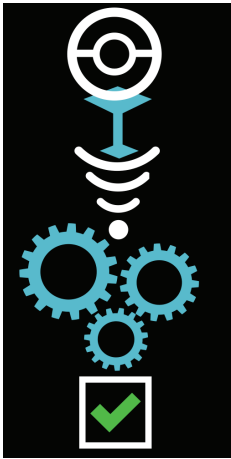
Pokémon  
Caught



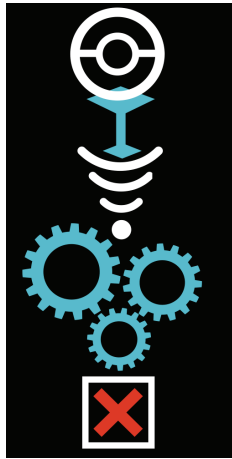
Pokémon Not  
Caught



Caught Unknown  
Pokémon



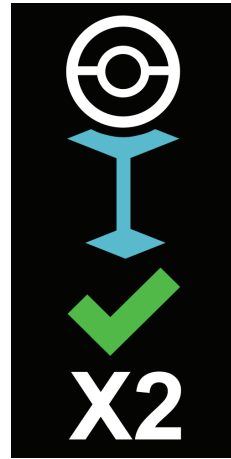
Auto-collect  
Pokéstop **ON**



Auto-collect  
Pokéstop **OFF**



Pokéstop  
In Range



Pokéstop  
Success  
Multiple Items



Pokéstop Item  
Success



Vibration  
**ON**



Vibration  
**OFF**



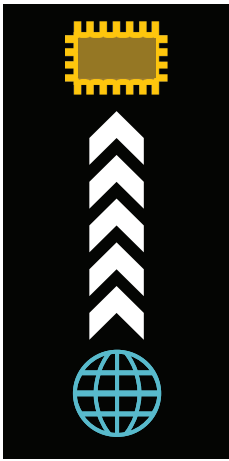
Notifications  
**ON**



Notifications  
**OFF**



Rotate  
Screen



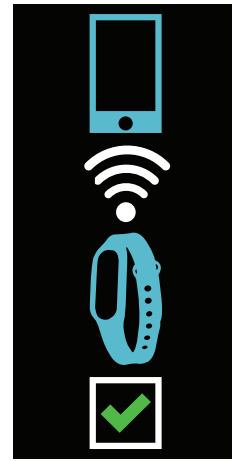
**Update In Progress**



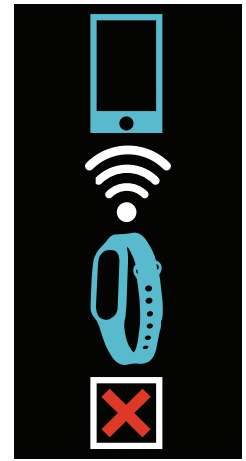
**Out of Pokéballs**



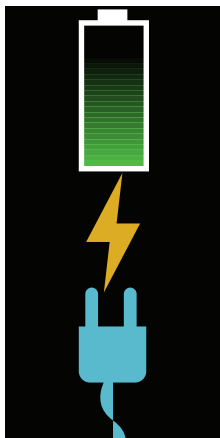
**Bag Full**



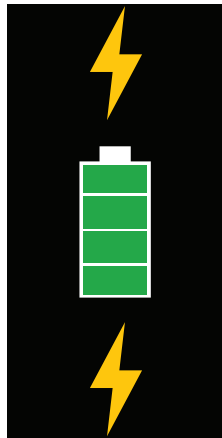
**Device is paired**



**Device not paired**



**Connect To Charging Cable**



**Charging**

---

## **Before You Start - Ensure that your Go-tcha Clip has the latest firmware**

Download the Go-tcha Clip App for even more features like checking your stats and changing your smartwatch settings to enhance the Go-tcha experience. Simply scan the QR code to take you to Go-tcha Classic\* on the Apple App Store page or the Go-tcha Clip Web App for Android Users.



android 

\*Go-tcha Clip uses the Go-tcha Classic App for Apple users

To connect your Go-tcha Clip to the Go-tcha Classic App, you must close the Pokémon Go App. Press the button on the Go-tcha Clip to wake the screen and it will connect automatically to the open Go-tcha Classic App. Updates will download automatically.

**Note:** The Go-tcha Clip cannot connect to more than one App at a time so the Pokémon Go App cannot be running in the background. If you tried to connect with the Pokémon Go App running, close both Apps and then open the Go-tcha Classic App again.



**THIS PRODUCT IS NOT SPONSORED, ENDORSED, OR APPROVED BY THE POKÉMON COMPANY OR Niantic.**

Device requires Bluetooth low-energy compatible smartphone with Pokémon GO app installed. Compatible with iPhones using iOS Ver. 12 onwards installed. Compatible with Android devices with 2 GB RAM or more, Bluetooth Smart (Bluetooth Ver. 4.0 or higher) capability, and Android Ver. 4.4–6.0 installed.

---

#### Technical Support

Before contacting Datel's customer service department, please ensure that you have read through and understood the information in this manual/guide. If you contact support, please ensure that you have information on when and where you purchased this product to hand.

#### Datel Customer Services Europe

Customers Services, Datel Ltd,  
Stafford Road,  
Stone,  
Staffordshire,  
ST15 0DG.  
UNITED KINGDOM

Web: <https://support.codejunkies.com>



© 2021 Datel Ltd. PowerSaves is a trademark of Datel Ltd. Pokémon is a trademark or registered Trademark of the POKÉMON COMPANY. All other trademarks are the property of their respective owners. Go-tcha Clip for Pokémon Go is a 100% unofficial product and is NOT sponsored, endorsed or approved by NINTENDO, nor any games developer or publisher.