



User Guide

Thank you for purchasing the Go-tcha Classic for Pokémon GO!

Enjoy Pokémon GO on the move without looking at your smartphone!

What's In The Box?

In your Go-tcha Classic for Pokémon Go box you should receive:

- ⊗ x1 Go-tcha Classic USB device
- ⊗ x1 Go-tcha wristband
- ⊗ x1 Go-tcha USB charger cable

Connecting Your Go-tcha

To connect your Go-tcha Classic to the Pokémon App:

- ⊗ Open the Pokémon GO App
- ⊗ Touch the Main Menu
- ⊗ Touch Settings
- ⊗ Touch 'Pokémon GO Plus'
- ⊗ Press the button on the Go-tcha Classic to make it discoverable to the Pokémon Go App
- ⊗ Touch your 'Pokémon GO Plus' under Available Devices list to connect.



Using Your Go-tcha Classic - Manual Catch

- ⊗ Go-tcha Classic will vibrate and animate the screen to show a new/duplicate Pokémon is near
- ⊗ Press the Go-tcha Classic button/screen to catch the Pokémon
- ⊗ Go-tcha Classic will vibrate and animate the screen to show a successful/unsuccessful catch
- ⊗ Go-tcha Classic will vibrate and animate the screen to show when a Pokéstop is in range
- ⊗ Press the Go-tcha Classic button to retrieve items from a Pokéstop
- ⊗ Go-tcha Classic will vibrate and animate the screen to show it has successfully/unsuccessfully collected the items and how many items it has collected

See '**Go-tcha Classic Screens**' on pages for a complete guide to the screen animation alerts.

Using Your Go-tcha Classic- Auto Catch

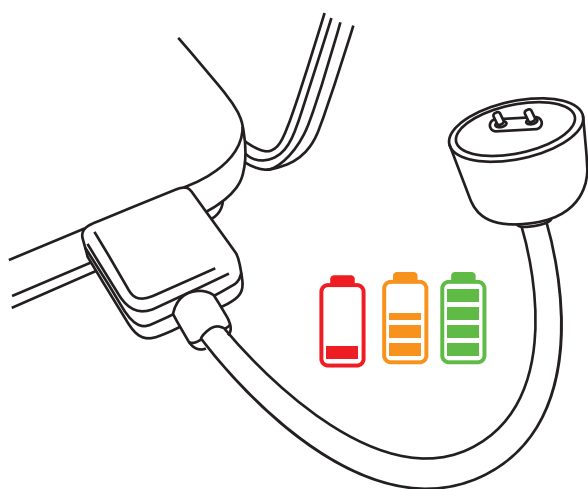
To turn the 'Auto-catch' function on, press the Go-tcha Classic button until '**Auto-catch ON**' is selected.

If you have Auto Catch on:

- Go-tcha Classic will vibrate and animate the screen to show a successful/unsuccessful catch
- Go-tcha Classic will vibrate and animate the screen to show it has successfully/unsuccessfully collected the items and how many items it has collected at a Pokéstop

To turn 'Auto-catch' off, press and hold the Go-tcha button until '**Auto-catch OFF**' is selected.

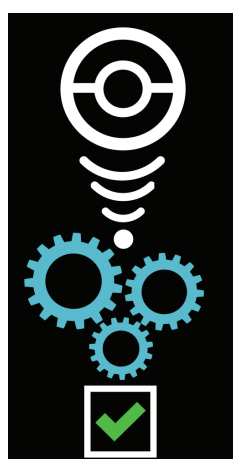
Charging Your Go-tcha Classic



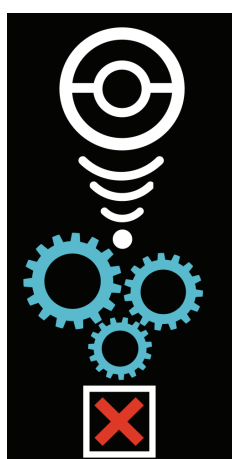
The Go-tcha Classic charges via a magnetic USB cable. Simply remove the Go-tcha Classic unit from the wrist band, connect the magnetic cable and connect the other end to a USB power source. The cable will only connect one way around - you will feel the magnets indicating the correct orientation as you position the connector. Simply return the Go-tcha Classic to the bracelet when fully charged. Battery life varies on the intensity of gameplay.

Once connected you can check that your Go-tcha is charging by pressing the screen button. The charging animation will appear to confirm that the Go-tcha is charging. If there is another Go-tcha animation running, then wait for the animation to stop and the screen is blank - now press the screen button to confirm the charging animation is displayed.

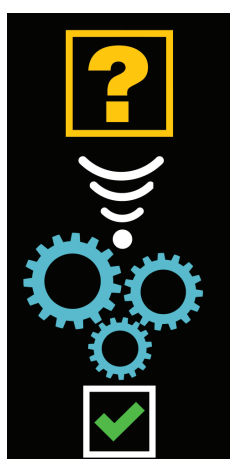
Go-tcha Classic Screens



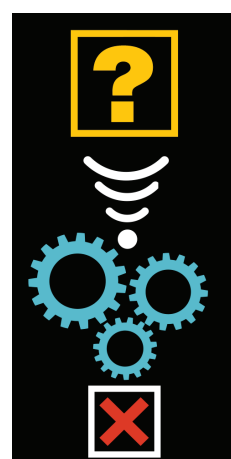
Auto-catch
ON



Auto-catch
OFF



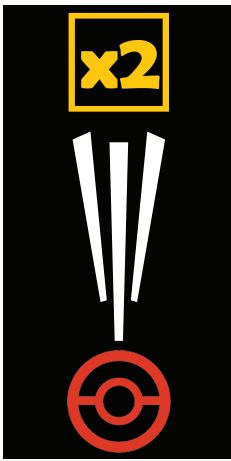
Auto-catch
new Pokémon
ON



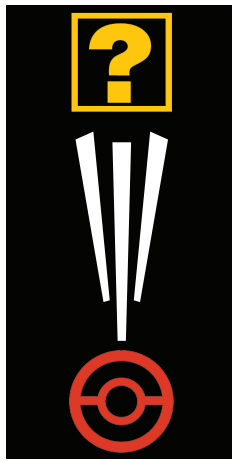
Auto-catch
new Pokémon
OFF



Mystery
Item



Catching Known
Pokémon



Catching
Unknown
Pokémon



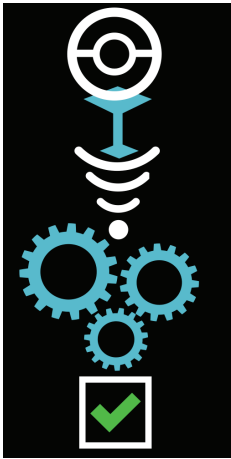
Pokémon
Caught



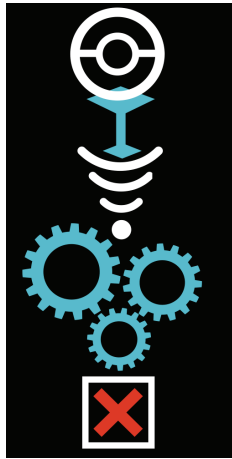
Pokémon Not
Caught



Caught Unknown
Pokémon



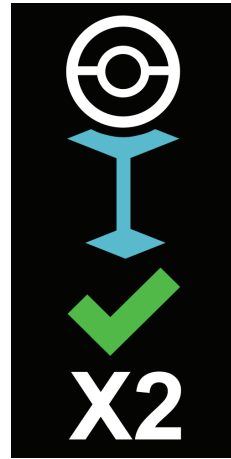
Auto-collect
Pokéstop **ON**



Auto-collect
Pokéstop **OFF**



Pokéstop
In Range



Pokéstop
Success
Multiple Items



Pokéstop Item
Success



Vibration
ON



Vibration
OFF



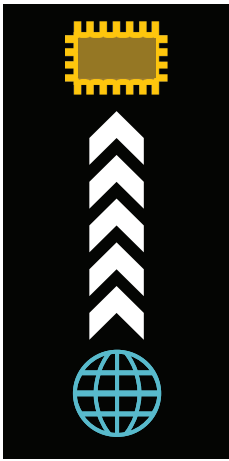
Notifications
ON



Notifications
OFF



Rotate
Screen



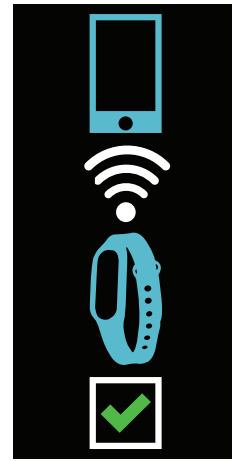
Update In Progress



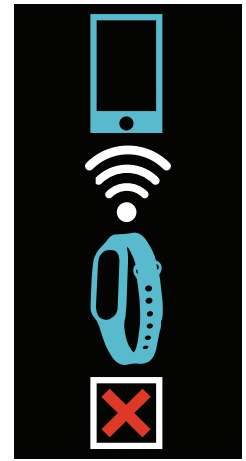
Out of Pokéballs



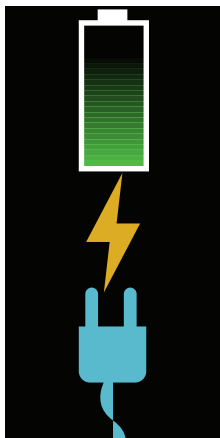
Bag Full



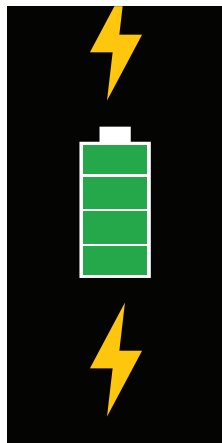
Device is paired



Device not paired



Connect To charging cable



Charging

Before You Start - Ensure that your Go-tcha Classic has the latest firmware

Download the Go-tcha Classic App for even more features like checking your stats and changing your smartwatch settings to enhance the Go-tcha experience. Simply scan the QR code to take you to Go-tcha Classic on the Apple App Store page or the Go-tcha Classic Web App for Android Users.



To connect your Go-tcha Classic to the Go-tcha Classic App, you must close the Pokémon Go App. Press the button on the Go-tcha Classic to wake the screen and it will connect automatically to the open Go-tcha Classic App. Updates will download automatically.

Note: The Go-tcha Classic cannot connect to more than one App at a time so the Pokémon Go App cannot be running in the background. If you tried to connect with the Pokémon Go App running, close both Apps and then open the Go-tcha Classic App again.



THIS PRODUCT IS NOT SPONSORED, ENDORSED, OR APPROVED BY THE POKÉMON COMPANY OR NIANTIC.

Device requires Bluetooth low-energy compatible smartphone with Pokémon GO app installed. Compatible with iPhones using iOS Ver. 12 onwards installed. Compatible with Android devices with 2 GB RAM or more, Bluetooth Smart (Bluetooth Ver. 4.0 or higher) capability, and Android Ver. 4.4–6.0 installed.

Technical Support

Before contacting Datel's customer service department, please ensure that you have read through and understood the information in this manual/guide. If you contact support, please ensure that you have information on when and where you purchased this product to hand.

Datel Customer Services

Datel Electronics Ltd,
Stafford Road,
Stone,
Staffordshire,
ST15 0DG.
UNITED KINGDOM

Web: <https://support.codejunkies.com>



© 2022 Datel Ltd. PowerSaves is a trademark of Datel Ltd. Pokémon is a trademark or registered Trademark of the POKÉMON COMPANY. All other trademarks are the property of their respective owners. Go-tcha Classic for Pokémon Go is a 100% unofficial product and is NOT sponsored, endorsed or approved by NINTENDO, nor any games developer or publisher.